

2026 NATIONAL NURSING ETHICS CONFERENCE



Ethics of Caring: Building Moral Community

WELCOMING ALL HEALTH PROFESSIONS

APRIL 16-17 | LOS ANGELES, CA

ETHICSOFCARING.ORG

CONFERENCE DESCRIPTION



All through history we have witnessed the power of people gathering to overcome challenges by building a moral community. Recognizing the pursuit of the moral good unites us together and is both empowering and sustaining. As healthcare professionals with shared ethical commitments, we are compelled to come together to build, strengthen, and sustain healthcare systems. Today, we face unique obstacles with diverse aims throughout our communities, summoning us to prioritize the ethics of caring and repair fractures that exist.

We hold each other accountable to honor the different voice – wherever it surfaces in the hierarchy – often hidden by rigidity, defensiveness and forgotten integrity. An ethic of caring invites individuals to voice questions or raise concerns that bring about compassionate respectful dialogue. We are not asked to do this alone. Rather together we create a culture that opens hearts that may be hardened by apathy, cynicism, or weariness, thereby building a community that reminds us of our shared humanity. Together we become a force that rekindles our moral imagination and nourishes our collective agency – where being seen, heard, and valued enhances strength and fortitude.

We share hope, even when it feels impossible, and are beckoned to cultivate it. Hope aspires creativity that transcends the status quo and with clear intention to discover ways to make things better. Collectively we find our way to a vision of caring and serving, with a steadfast commitment to the ethics and principles of our noble profession.

The 2026 National Nursing Ethics Conference (NNEC) continues to provide a foundation for moral community where dialogue, reflection, skill-building, exploration, growth, and flourishing combine to sustain these goals. Come join us to learn together how to intentionally collaborate, build relationships, and engage in respectful dialogue in a nurturing environment in which to grow and sustain ethical care.

OBJECTIVES

- Describe the components of a moral community that contribute to an ethical climate and expand ways of responding during turbulent times.
- Explain how collaboration in an ethical environment increases the efficacy of an individual's moral intent.
- Create a process for recognizing divisions and injustices that are most amenable to ethical resolution.
- Recognize ways to nourish our collective agency and rekindle our moral imagination as we honor our deeply valued professional commitments.
- Illustrate how to cultivate hope that counters apathy, cynicism, and weariness to support our ability to flourish.

WELCOME

Dear Colleagues and Friends,

If there was ever a time to gather, pause, and celebrate moral community, we believe it is an imperative now. Ethics of Caring has always been committed to increasing ethics knowledge and skill; we are just as devoted to curating a safe space for dialogue, comfort, joy, and beauty for those who serve others. As you prepare to join us, we hope you feel a sense of refuge and a place to cultivate hope together in community.

If you have attended before, you know this to be true. If you are attending for the first time, we welcome and encourage you to connect with this remarkable group of people around you.

To make your time at the conference effortless and comfortable, please review the information included in this program.

We wish you safe travels, and look forward to welcoming you!

-The 2026 NNEC Planning Committee Co-Chairs,



**Katherine
Brown-Saltzman,
MA, RN**

President,
Ethics of Caring,
UCLA Health
System (Retired)



**Erin Marturano,
MBE, MSN, RN,
HEC-C**

Hospital of the
University of
Pennsylvania



**Angela (Angie)
Knackstedt,
BSN, RN, NP-BC**

Children's Mercy
Kansas City



**Elizabeth Bertolini,
MMH, RN, HEC-C,
CHPN,**

Morristown
Medical Center
(Retired)



OUR COMMITMENT

- Welcoming participants of all backgrounds to create an environment that is respectful and inclusive
- Gathering with healthy farm-to-table Californian cuisine - buffet breakfasts and lunches each day (included in registration fee)
- Celebrating with a wine or beverage and hors d'oeuvres reception on the Terrace to end day one
- Surrounding you with a beautiful environment of art and wellness.
- Attending just one breakout session each day that allows for an immersion and depth of understanding in the topic of choice
- Discovering an opportunity for rich discussion and practical guidance
- Honoring through the acknowledgment of excellence in ethics with the Ethics of Caring Nursing Ethics Leadership Award and ANA DAISY Awards® for Ethics in Nursing Practice and Leadership
- Providing continuing education credit for nurses, social workers, and physicians
- Remembering our core values and our commitment to caring and ethics

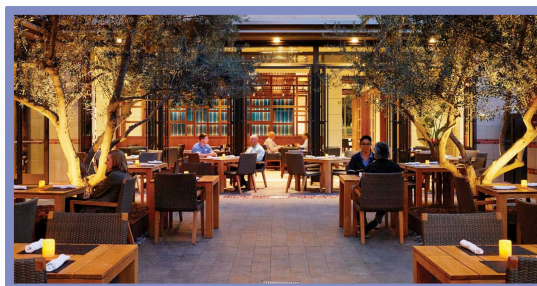
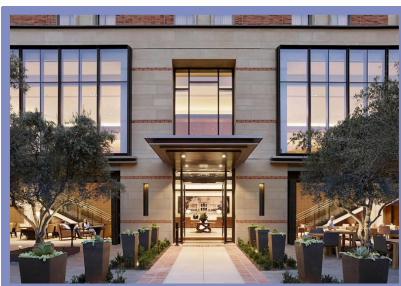
CONFERENCE LOCATION

UCLA Luskin Conference Center

425 Westwood Plaza

Los Angeles, California 90095

luskinconferencecenter.ucla.edu



PARKING: Self-parking is available in UCLA Parking Structure 8, Level 4.

There is a daily fee to park. [Click here](#) for UCLA parking pricing.

- Parking Structure 8 is directly across the street from the conference center. After you park on level 4, there is a convenient pedestrian bridge connecting Parking Structure 8 to the Luskin Conference Center (on Level 3). [Click here](#) for driving instructions to Parking Structure 8.

ONSITE RESTAURANT: Enjoy Luskin's onsite, gratuity-free restaurant, Plateia, while the conference is not in session.



GENERAL INFORMATION

PRE-REGISTRATION: Early registration will be held on Wednesday, April 15, from 15:00–17:00 near the business center off the main Hotel lobby.

POSTER SET-UP: Poster presenters are welcome to hang their posters on Wednesday, April 15, from 19:00–20:00 or on Thursday, April 16, at 06:30. Posters can be taken down anytime between 12:45 and 14:45 on Friday, April 17. Please bring your poster to the registration desk if you would like to store it there until your departure.

CHIMES: Chimes will be rung throughout the Conference to signal that 5 minutes are remaining until the next session begins.

NAMETAGS: Will include your color-coded workshop location(s). For best ecological practices, please return your name tag before departing the Conference.

CONNECTIONS BREAKFAST: Start your conference experience with meaningful connection during breakfast on Thursday—an opportunity to gather in a welcoming space and engage with fellow attendees before the day begins. [Click here](#) to learn more.

CONFERENCE MEALS:

Full Breakfast Buffet – Thursday and Friday, in the Centennial Foyer
Lunch Buffet – Thursday and Friday, weather permitting on the Terrace
Reception – Thursday evening, weather permitting on the Terrace

WEATHER: Daytime temperatures will be in the mid-70s. We plan to have lunch and the reception on the terrace. Please consider bringing sunscreen and a hat for outdoor events, as well as something warm, to compensate for cooler evenings and air conditioning.

BOOK TABLE: Visit the UCLA book table during your time at the conference. The table will be open during most breaks and at lunch.

“A moral community is one where its members are supported in moments of imperfection.”

-Lucia Wocial

DAY ONE

Thursday, April 16, 2026

<p>6:30 Centennial Foyer</p>	<p>Registration Opens</p>
<p>6:30-7:45 Centennial Foyer</p>	<p>Buffet Breakfast</p>
<p>7:45-8:00 Centennial Ballroom</p>	<p>Introduction</p>
<p>KEYNOTE 8:00-9:15 Centennial Ballroom</p>	<p>“Wellbecoming” Transformation Danny G. Willis, DNS, RN, PMHCNS-BC, FAAN Dean, College of Nursing University of Rhode Island</p>
<p>9:15-10:00</p>	<p>Break and Poster Session Coffee, Tea and Snacks</p>
<p>PLENARY 10:00-11:00 Centennial Ballroom</p>	<p>Ethical Dilemmas Underpinning Risks Associated with Nurse Suicide Judy E. Davidson, DNP, RN, MCCM, FAAN Associate Clinical Professor, School of Nursing, Ohio State University; Nurse Scientist Emeritus, University of California, San Diego</p>
<p>11:00-12:00 Centennial Ballroom</p>	<p>Skill-Building Session Shared Stories: Cultivating Empathy, Inspiring Compassion, and Forging Moral Community Led by Elizabeth Bertolini, MMH, RN, HEC-C, CHPN, and Brenda Barnum, MA(Bioethics), BSN, RNC-NIC, HEC-C</p>
<p>12:00-13:00 Terrace</p>	<p>Lunch</p>

DAY ONE CONTINUED ON NEXT PAGE

“Some of the issues that vex us most are resolvable only through the use of our collective moral power.”

- Edmond Pellegrino

DAY ONE CONTINUED

Thursday, April 16, 2026

<p>WORKSHOPS 13:00–14:30 Level 2, Breakout Rooms</p>	<p>Disentangling Perspectives: Engaging in Moral Compromise Using a Moral Distress Peer Support Tool Georgina Morley, PhD, MSc, RN, HEC-C</p> <p>Out of the Hospital, Into the Streets: Exercising our Radical Vision for the Future, Together Danisha Jenkins, PhD, RN, CCRN-K, NHDP-BC, NEA-BC, SANE-A</p> <p>Practicing Attunement: Art and Reflection at the Bedside Aaron Levy, PhD, MPhil</p> <p>Let’s Talk: Eliminating Barriers to Nurse Suicide Prevention Judy E. Davidson, DNP, RN, MCCM, FAAN</p> <p> Introductory Workshop </p> <p>Case-Based Clinical Ethics Skills: From Principles to Practice Kayla Tabari, RN, MBE, HEC-C Brenda Barnum, MA(Bioethics), BSN, RNC-NIC, HEC-C</p> <p>When Systems Strain the Soul: A Schwartz Rounds Dialogue on Hope, Ethics, and Moral Community Paula Goodman-Crews, LCSW, HEC-C Sophia Fantus, PhD, MSW, HEC-C Karyn Spear, MSW, LCSW, HEC-C Ashley Durant, RN Imani Dhillon, BSN, RN, PHN</p> <p>Navigating Tight Spaces: Exploring the Role of Nursing in Cultivating Moral Community Dea Mahanes, DNP, APRN, CCNS, CCRN, CNRN, HEC-C, FNCS Mark Fucanan, BSN, RN</p>
<p>14:30–15:00</p>	<p>Break and Poster Session Coffee, Tea and Snacks</p>
<p>15:00–15:45 Centennial Ballroom</p>	<p>Ethics of Caring National Nursing Leader Ethics Award Inspiration from recipient and ethics leader, Claretta Y. Dupree, RN, MSN, PhD</p> <p>Interviewed by Katherine Brown-Saltzman, MA, RN</p>

DAY ONE CONTINUED ON NEXT PAGE

DAY ONE CONTINUED

Thursday, April 16, 2026

CLOSING 15:45-17:00 Centennial Ballroom	Moving to a Different Rhythm: Jazz and the Moral Practice of Nursing Patrick T. Smith, PhD Senior Fellow, Director of Capacious Minds Initiative, Kenan Institute for Ethics, Duke University; Associate Research Professor of Theological Ethics and Bioethics, Duke University Divinity School
17:00-17:15 Centennial Ballroom	Closing Comments
17:15-18:30 Terrace	Wine and Beverage & Hors d'oeuvres Reception



CENTER FOR
BIOETHICS
HARVARD MEDICAL SCHOOL

Educational Opportunities Center for Bioethics Harvard Medical School

Available in three formats,
Master of Science in Bioethics:

- 1-year, full-time, in-person, HMS Campus, Boston
- 2-years, part-time, online
- 3-years, part-time, online



Scan the code
to learn more.

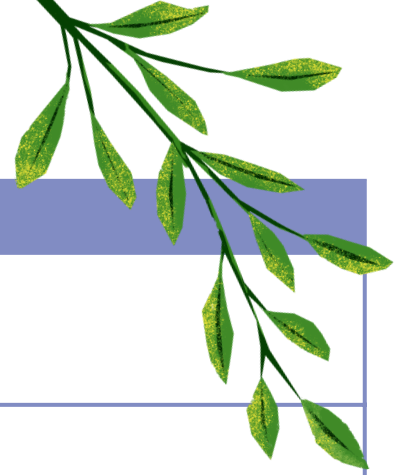
Academic certificate programs
designed for working professionals:

- **Fellowship in Bioethics:** September to April, in-person, weekly meetings for 9 months, HMS Campus, Boston
- **Online Fellowship Certificate:** January to June, online, weekly meetings for 6 months
- **Pediatric Bioethics Certificate:** September to December, online, weekly meetings for 3 months

bioethics.hms.harvard.edu

NEW
For
Fall 2026

DAY TWO



Friday, April 17, 2026	
6:30 Centennial Foyer	Registration Opens
6:30-7:45 Centennial Foyer	Buffet Breakfast
WELLNESS 6:45-7:30 Level 2, Illumination	Holding Steady: Practices that Sustain Healthcare Professionals Laura B. Webster D. Be, RN, HEC-C Region Vice President of Ethics, CommonSpirit Health <i>This is an optional session - come as you need.</i>
7:45-8:00 Centennial Ballroom	Introduction
KEYNOTE 8:00-9:15 Centennial Ballroom	Seeking Community in a Polarized Healthcare Environment: Lessons from Nursing Ethics Georgina Morley, PhD, MSc, RN, HEC-C Nurse Ethicist and Director of the Nursing Ethics Program, Cleveland Clinic
9:15-10:00	Break and Poster Session Coffee, Tea and Snacks
PLENARY 10:00-11:00 Centennial Ballroom	Exploring Nursing Practice Beyond (meta) Physical Walls Danisha Jenkins, PhD, RN, CCRN-K, NHDP-BC, NEA-BC, SANE-A Assistant Professor, School of Nursing, San Diego State University; Director of Disaster Response and Strategic Innovation, Sharp Health Care
11:00-12:00 Centennial Ballroom	Skill-Building Session Many Voices, One Patient: How a Community with Different Views Comes Together to Care for Complex Cases Led by Deb Strohecker, RN, BSN, CHPN, and Kayla Tabari, RN, MBE, HEC-C
12:00-13:00 Terrace	Lunch

Friday, April 17, 2026

WORKSHOPS
13:00-14:30
 Level 2,
 Breakout
 Rooms

Nurse and Patient Well-being Matter: An Ethical Concern

Danny G. Willis, DNS, RN, PMHCNS-BC, FAAN

Beyond the Checklist: Jazz-Inspired Ethics for Nursing Practice

Patrick T. Smith, PhD

Poster Pearls: Sharing Highlights and Lessons Learned

Elizabeth Bertolini, MMH, RN, HEC-C, CHPN

Sarah Delgado, DNP, RN, ACNP

**Ethics Consultation in Difficult Cases:
 The Role of Direct Professional Caregivers**

Ellen M. Robinson, RN, PhD, HEC-C, FAAN

Brian P. Cyr, MSN, RN-BC

Beth Kohlberg, MSHCE, BSN, RN, HEC-C

Christine M. Marmen, MEd, MSN, RN, OCN, CHSE

**Promoting Moral Community in Organ Donation and
 Transplantation**

Ian Wolfe, PhD, MA, RN, HEC-C

Sarah B. Vittone, DBe, MA, MSN, RN, HEC-C

Joseph A. Raho, PhD

**Caution, Icy Road Ahead! Ethical Care for Diverse Patient
 Populations during an Immigration Enforcement Crisis**

Kellie Lang, JD, RN

Sabrina Derrington, MD, MA, HEC-C, FAAP

 **Nurse Leader Workshop** 

Caring in Nursing Leadership: "Nurses' Bodies, Nursing Bodies"

Claretta Y. Dupree, RN, MSN, PhD

14:30-14:45

Break

Coffee, Tea and Snacks

14:45-15:30

Centennial
 Ballroom

ANA DAISY Awards for Ethics in Nursing Practice and Leadership

Hear from recipients **Mark Fucanan, BSN, RN** and

Dea Mahanes, DNP, APRN, CCNS, CCRN, CNRN, HEC-C, FNCS

Interviewed by

Kara Curry, MA, RN, HEC-C

CLOSING

15:30-16:45

Centennial
 Ballroom

**Stories that Heal:
 Non-Traditional Pathways to Care and Community**

Aaron Levy, PhD, MPhil

Director, Health Humanities Initiatives and
 Penn Medicine Listening Lab; Senior Lecturer, Departments of
 English and the History of Art, University of Pennsylvania

16:45-17:00

Closing Comments

SPEAKERS



***Danny G. Willis, DNS, RN,
PMHCNS-BC, FAAN**



***Patrick T. Smith, PhD**



***Judy E. Davidson, DNP, RN,
MCCM, FAAN**



***Georgina Morley, PhD, MSc,
RN, HEC-C**



***Danisha Jenkins, PhD, RN, CCRN-K,
NHDP-BC, NEA-BC, SANE-A**



***Aaron Levy, PhD, MPhil**



Katherine Brown-Saltzman, MA, RN



Kara Curry, MA, RN, HEC-C

**Speaker will also be presenting a breakout session*

WORKSHOP SPEAKERS



**Brenda Barnum, MA (Bioethics),
BSN, RNC-NIC, HEC-C**
Clinical Ethicist, Center for Bioethics,
Children's Hospital Los Angeles



Elizabeth Bertolini, MMH, RN, HEC-C, CHPN
Morristown Medical Center
(Retired)



Brian P. Cyr, MSN, RN-BC
Acuity Plus Coordinator/
Systems Project Manager,
Massachusetts General Hospital



Sarah Delgado, DNP, RN, ACNP
Clinical Practice Research and Policy Coordinator,
PIH Health



Sabrina F. Derrington, MD, MA, HEC-C, FAAP
Director, Center for Bioethics,
Children's Hospital Los Angeles;
Director of Research Ethics,
Southern California Clinical and Translational Science Institute



Imani Dhillon, BSN, RN, PHN
Staff RN,
Kaiser Permanente Zion Medical Center

WORKSHOP SPEAKERS



Claretta Y. Dupree, RN, MSN, PhD
Captain, U.S. Navy;
Adjunct Professor of Advanced Ethics,
Trinity International University;
(Retired)



Mark Fucanan, BSN, RN
Clinical Development Specialist,
Clinical Ethics Resource Nurse,
G17 Stem Cell Transplant & Cellular Therapy
The University of Texas
MD Anderson Cancer Center



Ashley Durant, RN
Telemetry RN,
Kaiser Permanente Zion Medical Center



Sophia Fantus, PhD, MSW, HEC-C
Associate Professor, School of Social Work;
Master of Social Work Program Director,
University of Texas at Arlington



Paula Goodman-Crews, LCSW, HEC-C
Medical Bioethics Director,
Kaiser Permanente



Beth Kohlberg, MSHCE, BSN, RN, HEC-C
Staff RN and Ethics Coordinator,
St. Louis Children's Hospital

WORKSHOP SPEAKERS



Kellie Lang, JD, RN
Medical Bioethics Director,
Kaiser Permanente South Bay Medical Center



**Dea Mahanes, DNP, APRN,
CCNS, CCRN, CNRN, HEC-C, FNCS**
Clinical Nurse Specialist,
Nerancy Neuroscience Intensive Care Unit
and Neuroscience Intermediate Unit
University of Virginia Health



Christine M. Marmen, MEd, MSN, RN, OCN, CHSE
Professional Development Specialist,
Norman Knight Nursing Center,
Massachusetts General Hospital



Joseph Raho, PhD
Clinical Ethicist,
UCLA Health Ethics Center;
Asst Clinical Professor of Pediatrics,
David Geffen School of Medicine at UCLA



Ellen M. Robinson, RN, PhD, HEC-C, FAAN
Affiliate Faculty Member,
Harvard Medical School, Center for Bioethics



Karyn Spear, MSW, LCSW, HEC-C
Social Worker,
Children's Hospital Los Angeles

WORKSHOP SPEAKERS



Deb Strohecker, RN, BSN, CHPN
Triage RN,
Providence Connections Palliative Care



Kayla Tabari, RN, MBE, HEC-C
Clinical Ethicist and Fellowship Supervisor,
Providence Center for Health Care Ethics



Sarah B. Vittone, DBe, MA, MSN, RN, HEC-C
Associate Professor, Berkley School of Nursing;
Bioethicist, Pellegrino Center for Clinical Bioethics,
Georgetown University



Ian Wolfe, PhD, MA, RN, HEC-C
Director of Ethics,
Children's Minnesota

"The vital skill essential to a strong moral community is giving voice to values, particularly in times of conflict."

- Lucia Wocial

AWARD RECIPIENTS

2026 Ethics of Caring National Nursing Ethics Leadership Award



Claretta Y. Dupree, RN, MSN, PhD
Captain (Retired)

U.S. Navy

Freelance Editor

Adjunct Professor Emeritus

Advanced Ethics

Trinity International University

ANA DAISY Awards® for Ethics in Nursing Practice and Leadership



Clinician Honoree

Mark Fucanan, BSN, RN

Clinical Development Specialist,

Clinical Ethics Resource Nurse,

G17 Stem Cell Transplant & Cellular Therapy

The University of Texas

MD Anderson Cancer Center



Nurse Leader Honoree

**Dea Mahanes, DNP, APRN, CCNS,
CCRN, CNRN, HEC-C, FNCS**

Clinical Nurse Specialist,

**Nerancy Neuroscience Intensive Care Unit
and Neuroscience Intermediate Unit**

University of Virginia Health

POSTERS

	AUTHOR	POSTER TITLE
1	Ian Alexander MSN, RN, ACCNS-AG, PCCN; Elizabeth Carnall, MSN, RN-BC, NE-BC; Kathleen O'Rourke, MSN, RNC-OB, CBC	Empowering Nurses to Navigate Ethical Challenges Utilizing the Moral Distress Map
2	Katie Behringer, MSN, RNC-NIC, CBC, NPD-BC; Kimberly Mason, MSN, RN, PCNS-BC, CPN; Hannah Dashefsky, BSN, RN; Brian de Jesus, MSN, RN, CPN; Emma Price, BSN, RN	That's so NEET! Leveraging a Nursing Ethics Engagement Team to Promote an Ethical Practice Environment
3	Katie Behringer, MSN, RNC-NIC, CBC, NPD-BC; Kimberly Mason, MSN, RN, PCNS-BC, CPN; Katharine Press Callahan, MD, MSME	Let's Talk About It: Promoting Effective Care Team Discussions
4	Christian Boso, PhD, RN; Godson O. Ofori, MN (student), RN; Bernard Nabe, PhD (student), RN; Godswell S. Lanyo, MN (student), RN; Tina Reid, EdD, MSN, BSN	A Systematic Review of Artificial Intelligence and Ethical Issues in the Education of Healthcare Professionals
5	Maryanne Bourbeau, MS, CLSSGB; Scott D. Crespy, PhD, LSSBB	Reducing Bias in Behavior and Violent Patient Flags: A Trauma-Informed Care Approach
6	Charlotte Bryant, MSN, RN	The Ethical and Structural Implications of Rural Hospital Closures

Posters #1-5 in Centennial Ballroom, Posters #6-16 in Pinnacle, Posters #17-27 in Odyssey, and Posters #28-38 in Pathways.

POSTERS



	AUTHOR	POSTER TITLE
7	Kirsten Buen, PhD, RN, MA; Neil Wenger, MD, MPH; Angelique Rubio, BS; Nick Jackson, PhD; Melissa Powell, PhD, RN; MarySue V. Heilemann, PhD, RN	Compassion in Conflict: Exploring Nurses' Compassion in Moral Distress
8	Renee Burns; Lisa Sator, PT, DPT, WCS, CLT	Patient and Guest Relations Meets Ethics: A Collaborative Approach to Patient and Family-Centered Care
9	Sophia Calle; Kylie Kuck, DNP, AGCNS-BC; Amy Delaney, PhD, RN, CPNP- AC/PC (faculty advisor)	Simulation-Enhanced Ethics Education: An Interdisciplinary Strategy to Strengthen Ethical Awareness and Communication
10	Sumreen Chaudhry, Staff Chaplain, PBCC, MA, PhD(c)	The Moral Duty to Rest: Reframing Self-Care as Ethical Practice in Nursing and Interdisciplinary Care
11	Dianna Copley, DNP, APRN-CNS, ACCNS-AG, CCRN; Georgina Morley, PhD, MSc, RN	Clinical Nurse Specialist-Led Ethics Rounds: Addressing Moral Distress and Empowering Nurses with Ethics Support
12	Dianna Copley, DNP, APRN-CNS, ACCNS-AG, CCRN; Georgina Morley, PhD, MSc, RN	Helping Nurses Thrive Through Nursing Ethics Programming
13	Hannah Dube; Francesca Kearns; Nancy Meedzan DNP, RNCNE, NEA-BC; Amy Delaney, PhD, RN, CPNP- AC/PC (faculty advisor)	Restoring Moral Imagination: A Pilgrimage of Ethical Formation in Prelicensure Nursing Students

**Posters #1-5 in Centennial Ballroom, Posters #6-16 in Pinnacle, Posters #17-27 in Odyssey,
and Posters #28-38 in Pathways.**

POSTERS

	AUTHOR	POSTER TITLE
14	Adilene Espinoza, RN; Gabriela Talamantes, BSN RN	Honoring Dignity and Moral Community: Transforming Ethical Climate Through 3 Wishes Project
15	Stacy Gwatura, CRNP, ACHPN, HEC-C; Steve Eveland, RN, CHPN	Enhanced Ethics Education in Palliative Care: The Missing Link
16	Maureen Hermann, DNP, MSN, BSN, RN	The Power of Kindness and Gratitude in Shaping the Next Generation of Nursing Leaders
17	Renata Divis, RN, BSN, CPN; Hazel Maquera, RN, BSN; Dorothy Borzsak, RN, BS, CPN, MPH	Implementation of an Early Action Screening Tool to Guide Ancillary Consults and Ethical Decision Making in Pediatric Nursing Practice
18	Kalen Kennedy, PhD; Alyssa Morris, PhD; Jenny Shen, PhD; Kelly Kohler, PsyD; Sierra Kuzava, PhD; Catherine Mogil, PsyD	Beyond the Zero-Sum Frame: Ethical Allocation of Mental-Health Resources for Non-Birthing Parents
19	Kelly Kohler, PsyD	Balancing Need, Hope, and Resources: A Responsive Clinical Model for Delivering Psychotherapy to Families in the NICU
20	Maria Elena Maldonado, BSN, RN, CCRN	Trending Toward Resilience: Fostering Nurse Wellness in the SICU
21	Louisa Mahoney, BSN, RN, OCN; Erin Marturano, MBE, MSN, RN, HEC-C; Aliza Narva, JD, MSN, RN, HEC-C	Ethics Everywhere: A Monthly Digest at the Intersection of Healthcare and the Humanities
22	Marisa Mauro, BSN, RN	Respect for Autonomy in Adopted Patients Undergoing Genetic Testing: A Nursing Ethics Perspective

Posters #1-5 in Centennial Ballroom, Posters #6-16 in Pinnacle, Posters #17-27 in Odyssey, and Posters #28-38 in Pathways.

POSTERS



	AUTHOR	POSTER TITLE
23	Joyce Neumann PhD, APRN, AOCN, HEC-C, FAAN	Clinical Ethics Resource Nurse Program: Empowering Nurses in Building a Moral Community
24	Heather Patterson, MSN, RN, CNE	From Classroom to Clinic: Preparing Nursing Students for Real-World Ethical Dilemmas
25	Caitlin Reaves BSN, RN, CPN	RISE: Caring for the Human Behind the Credentials
26	Tina Reid, EdD, MSN, BSN	Cultivating Conscience: Ethical Revision of a Nurse Faculty Academy Curriculum to Address Bias and Foster Inclusivity
27	Ellen M. Robinson, RN, PhD, HEC-C, FAAN; Gorrette K. Nalwadda, PhD, MSc, BScN; Annekathryn Goodman, MD, MS, MA, MPH	Educating Health Professionals about Gender-Based Violence: A Collaboration between Luziibangi International Health School and MGH Strength and Serenity
28	Sarah Romain, PhD, RN	Between Communities: The Moral Burden of the Travel Nurse
29	Rachel Sabbagh, DNP, MSN, RN, PMHCNS-BC; Shannon Oberdorfer, MSW, LCSW	Collaborative Ethics in Emergency Psychiatric Involuntary Holds: Responding to Policy Shifts Through IPEC Competencies
30	Jeanie Sauerland, MA, BSN, RN HEC- C; Cynthia Ledesma, MSN RN	Building a Moral Community by HUGS
31	Mary Senkel, MSN, APRN, FNP-C; Linda Luu, MSN, APRN, FNP-C	Building a Moral Community Through Goal-Concordant Care: A Collaborative Intervention to Support Ethical Practice in Oncology
32	Jenny Shen, PhD	Enhancing Support for Families in the NICU: Evaluation of an Accessible Group Intervention

Posters #1-5 in Centennial Ballroom, Posters #6-16 in Pinnacle, Posters #17-27 in Odyssey, and Posters #28-38 in Pathways.

POSTERS

	AUTHOR	POSTER TITLE
33	Pageen Small, DBe, BSN, RN, HEC-C; Sarah Hartrick, BSN, RN, CCRN, CWOCN	Widening the Circle: Expanding the Reach of a Clinical Ethics Resource Nurse Program
34	Sarah Sumner, PhD, RN, CCRN, OCN, CHPN	Code Connection: A pilot project using the ANA Code of Ethics, podcasts, and journal club format to foster moral resilience for ethical practice (Mar-Dec 2026)
35	Heather Vincent, PhD, MSN, RN, HEC-C	Moral Distress Perspectives from a Multi-Disciplinary Moral Community
36	Karolus Wangi, PhD, RN	Nurses' Perspectives on Dignity in Caring for Patients with Transfusion-Dependent Thalassemia in West Java, Indonesia
37	Kimberly Whalen, DNP, MS, CCRN, NEA-BC; Ellen Robinson, RN, PhD, HEC-C, FAAN; Christine Marmen, MEd, MSN, RN, CHSE; Erika Rosato, DNP MHA, RN, OCN, NE-BC; Andrew Phillips, PhD, RN, FAMIA, RN; Melissa Uveges, PhD, MAR, RN, HEC-C, FAHA	Building a Moral Community: Ethics Education to Address Moral Distress in Pediatric Intensive Care Nurses
38	Ying Zhang, RN, MSN, PHN, CCRN, PCCN; Charina Emerson, DNP, NEA-BC, CCRN	Nurses' Perspectives on Artificial Intelligence in Healthcare Ethics: A Systematic Literature Review

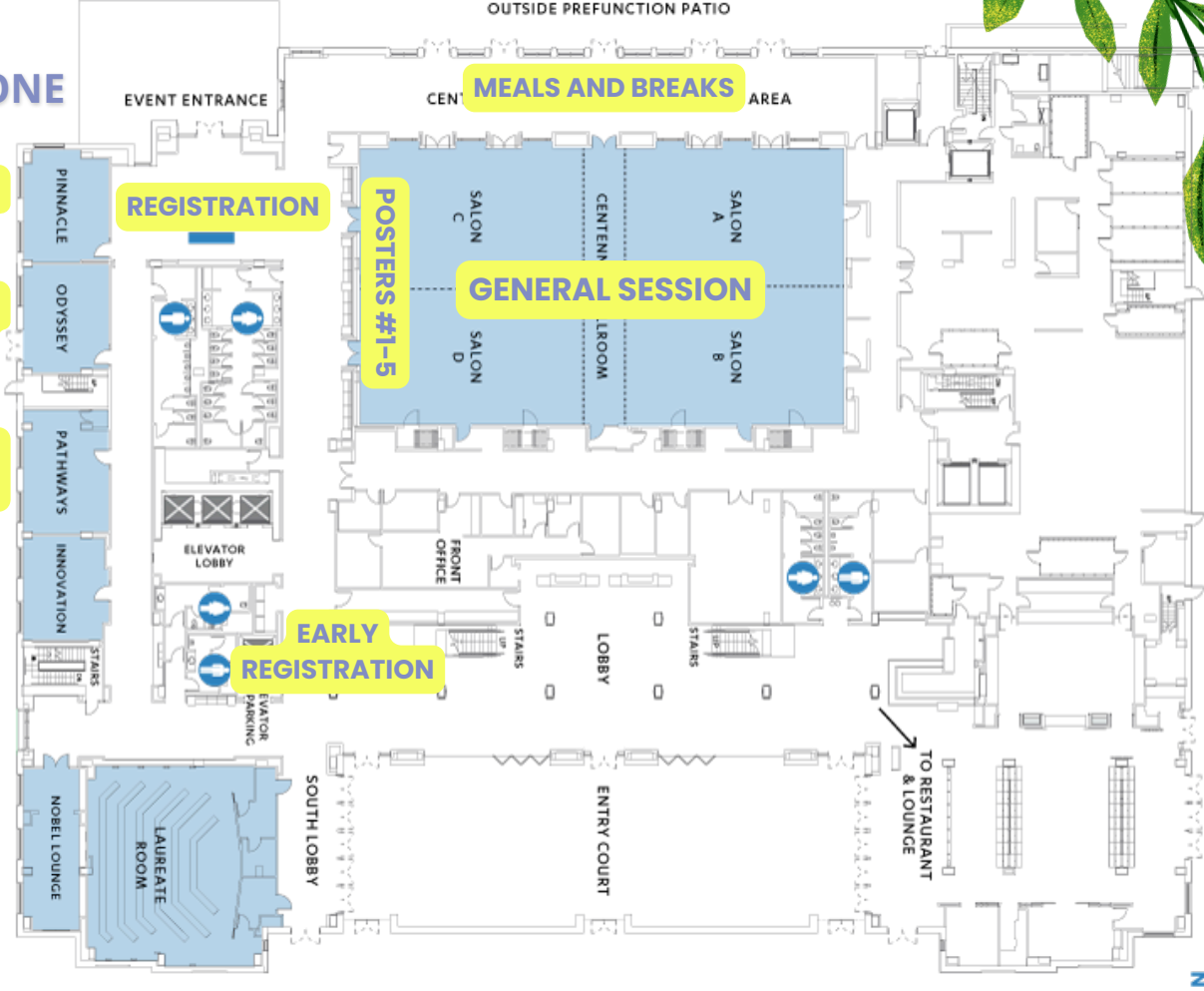
Posters #1-5 in Centennial Ballroom, Posters #6-16 in Pinnacle, Posters #17-27 in Odyssey, and Posters #28-38 in Pathways.

ROOM MAPS

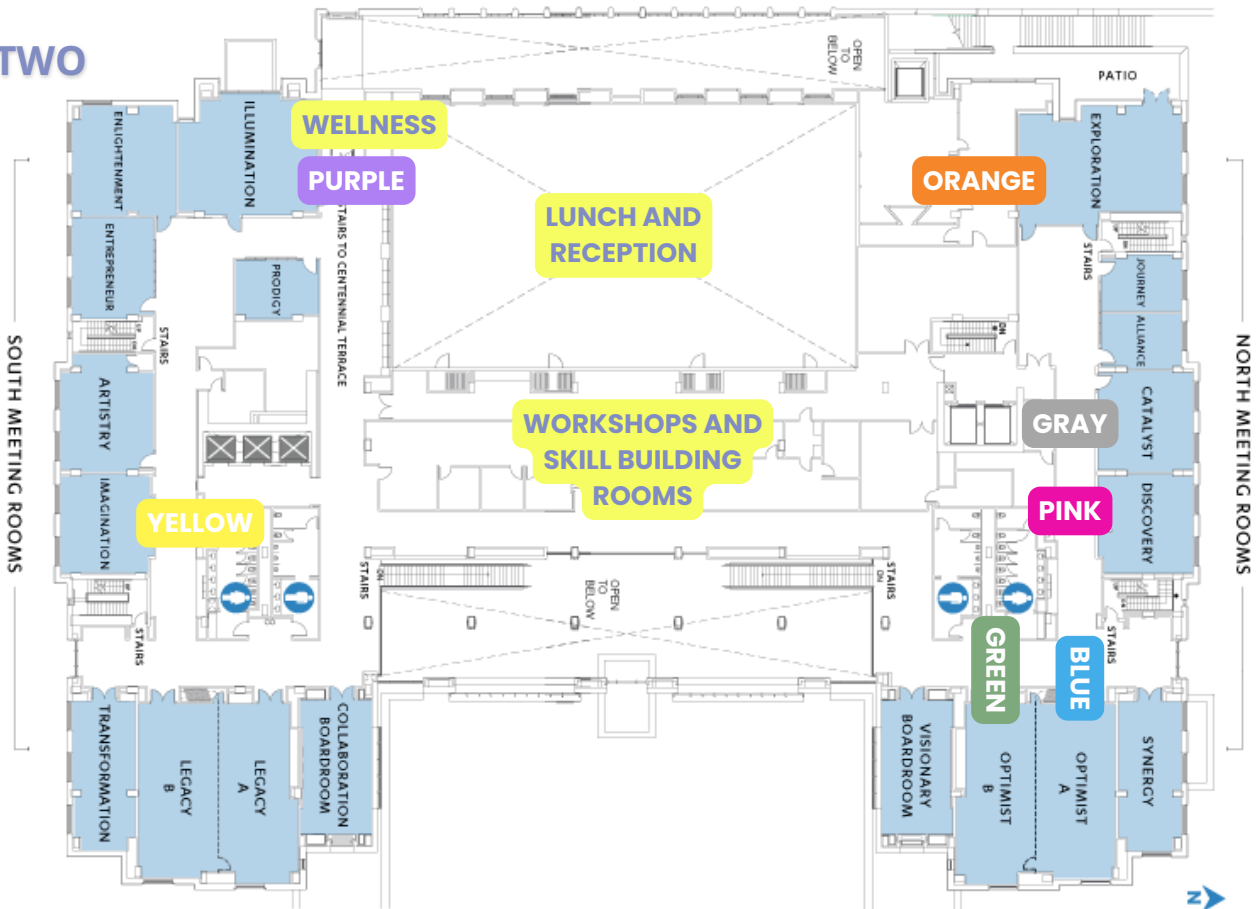


LEVEL ONE

- POSTERS #6-16
- POSTERS #17-27
- POSTERS #28-38



LEVEL TWO



CONTINUING EDUCATION

Requirement for successful completion: Participants may obtain continuing education credit by submitting the attendance code, selecting days attended, and completing an evaluation.

Contact hours can be claimed until May 16, 2026, at 5 pm.



Joint Accreditation: In support of improving patient care, Children's National Hospital is jointly accredited by the Accreditation Council for Continuing Medical Education (ACCME), the Accreditation Council for Pharmacy Education (ACPE), and the American Nurses Credentialing Center (ANCC), to provide continuing education for the healthcare team. Children's National Hospital Accreditation Provider# 4008362.

CREDIT DESIGNATION STATEMENTS

Physician: Children's National Hospital designates this live activity for a maximum of **15.75 AMA PRA Category 1 Credits™** for physicians. Physicians should claim only the credit commensurate with the extent of their participation in the activity.

Nurse: Children's National Hospital designates this activity for a maximum of **15.75 live ANCC contact hours**.

Social Work: As a Jointly Accredited Organization, Children's National Hospital is approved to offer social work continuing education by the Association of Social Work Boards (ASWB) Approved Continuing Education (ACE) program. Organizations, not individual courses, are approved under this program. Regulatory boards are the final authority on courses accepted for continuing education credit. Social workers completing this course receive **15.75 ethics continuing education credits**.

You will not automatically receive credit for attending the conference: you must submit the attendance code then log into ce.childrensnational.org to complete required steps to claim CE.

The attendance code and login information will be available during the conference and will be emailed to all NNEC attendees on Saturday, April 18.

For full Continuing Education information, please visit:
ethicsofcaring.org/2026-continuing-education/.

ETHICS OF CARING NATIONAL PLANNING COMMITTEE

Co-chair – *Katherine Brown-Saltzman, MA, RN,
President, Ethics of Caring, UCLA Health System (Retired)

Co-chair – Elizabeth Bertolini, MMH, RN, HEC-C, CHPN,
Morristown Medical Center (Retired)

Co-chair – Angela (Angie) Knackstedt, BSN, RN, NPD-BC,
Children’s Mercy Kansas City

Co-chair – Erin Marturano, MBE, MSN, RN, HEC-C,
Hospital of the University of Pennsylvania

***Brenda Barnum, MA(Bioethics), BSN, RNC-NIC, HEC-C,**
Children’s Hospital Los Angeles

***Elissa Brown MSN, RN, PMHCNS-BC, FCNS,** Greater Los Angeles VA (Retired)

Nancy Jo Bush, DNP, MA, RN, AOCN, FAAN, UCLA School of Nursing

Kara Curry, MA, RN, HEC-C, American Nurses Association

Brian P. Cyr, MSN, RN-BC, Massachusetts General Hospital

Sarah Delgado, DNP, RN, ACNP, PIH Health

Paula Goodman-Crews, MSW, LCSW, HEC-C, Kaiser Permanente

***Linda Gorman, MN, RN, PMHCNS-BC. FPCN,**
Cedars-Sinai Medical Center (Retired)

L. McLean House, MD, Vancouver Clinic

Beth Kohlberg, MSHCE, BSN, RN, HEC-C, St Louis Children’s Hospital

Kellie Lang, JD, RN, Kaiser Permanente South Bay Medical Center

Kelley Lazor, BSN, RN, PCCN, Hospital of the University of Pennsylvania

Ellen M. Robinson, RN, PhD, HEC-C, FAAN, Massachusetts General Hospital

Kayla Tabari, RN, MBE, HEC-C, Providence Center for Health Care Ethics

Sarah B. Vittone, DBe, MA, MSN, RN, HEC-C,
Georgetown University Berkley School of Nursing

Laura Webster, DBe, RN, HEC-C, CommonSpirit Health

Ian Wolfe, PhD, MA, RN, HEC-C, Children’s Minnesota

**Long-standing member of the Ethics of Caring Committee*

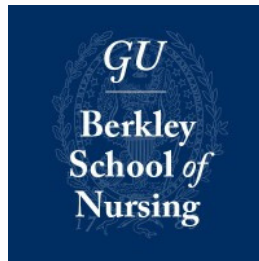


SPONSORS

"Real generosity toward the future lies in giving all to the present." -Albert Camus

Ethics of Caring gratefully acknowledges the support of the following sponsors, whose generous contributions have helped pave the way for the 2026 National Nursing Ethics Conference.

PLATINUM SPONSORS (\$7,500)



GOLD SPONSORS (\$5,000)



SPEAKER SPONSORS (\$3,500)



SPONSORS

Ethics of Caring gratefully acknowledges the support of the following sponsors, whose generous contributions have helped pave the way for the 2026 National Nursing Ethics Conference.

SILVER SPONSORS (\$2,500)



EDUCATIONAL SPONSORS



CENTER FOR
BIOETHICS
HARVARD MEDICAL SCHOOL



Tau Chapter of Sigma Theta Tau International
Honor Society of Nursing at
Georgetown University

SUPPORTERS



If your institution is interested in sponsoring future conferences, please contact Katherine Brown-Saltzman at brownsaltzman@gmail.com.

SCHOLARSHIPS

Ethics of Caring is committed to providing education to nurses and healthcare professionals to help develop the next generation of ethics leaders. Thank you to our generous donors who fund these scholarships. Join us in congratulating our recipients for the 2026 NNEC!

Ann Hamric Memorial Scholarship

Heidi Funke, Duquesne University, Oregon Health & Science University
Arielle Gurien, Loyola University
Stacy Gwatura, University of Maryland

Ethics of Caring Scholarships for RNs

Graciously funded by leaders including Dr. Carol Taylor, Dr. Connie Ulrich, Dr. Christine Grady, and Dr. Cathy Robichaux.

Alycia Costanzo, University of Rochester Medical Center
Deborah Mitchell, Children's National Hospital
Devie Charbonneau, UCLA Health Ambulatory Nursing Department
Karolus Wangi, Pennsylvania State University
Etan Yeshua, VHC Health

Marsha Fowler Ethics of Caring Scholarship

Jillian Lee, CHOC/Rady Children's Hospital of Orange

Ethics of Caring Scholarship for Social Work

Michelle Rhodes, St. Louis Children's Hospital

Ethics of Caring Scholarship for Hospital Chaplain

Sumreen Chaudhry, Hospital of the University of Pennsylvania

Minority Ethnic Nurse Scholarship

Lisa Alexander, Brenau University

Linda Tigert Early Career Scholarship

Talia Neves, Premise Health

Linda Tigert Active in Ethics Scholarship

Brianna Tidd, Seattle Children's Hospital

Linda Tigert Nursing Faculty Scholarships

Christian Boso, Salisbury University
Amy Delaney, Providence College

Myra Possman Memorial Scholarships

Supported by Linda Tigert for employees of UCLA Santa Monica Hospital.

Paul Boy, UCLA Santa Monica Hospital
Heather Garcia, UCLA Santa Monica Hospital

*"We make a life by
what we give."
-Winston Churchill*

SCHOLARSHIPS

Betty Battenfield Memorial Scholarship for Prelicensure Student

Supported by Kathleen Barta, RN, EdD.

Sophia Calle, Providence College

Margaret Sullivan Scholarship for New Graduate RN

Supported by Kathleen Barta, RN, EdD.

Nicole Arana, York College (CUNY)

Evelyn Eldred Scholarship for New Graduate RN

Supported by Kathleen Barta, RN, EdD.

Sara Kate Besanceney, CHOC Rady Children's Health Orange County

Ken Longshaw Memorial Scholarship for Kaiser Permanente RN

Supported by Theresa Drought, RN, PhD.

Karis Pickett, Kaiser Permanente South Bay

Children's Hospital Los Angeles, Allied Health Professional Scholarship

Nalisha Kumar, Children's Hospital Los Angeles

Children's Hospital Los Angeles, Clinical Care Registered Nurse Scholarship

Jenna Palmer, Children's Hospital Los Angeles

St. Catherine Scholarship

Supported by Katherine Brown-Saltzman, RN, MA.

Elizabeth Anderson, St. Catherine University

Hospice and Palliative Nurses Foundation NNEC Scholarship

Femi Olutoye, Vancouver Coastal Health

*"Giving is not just about making a donation.
It is about making a difference."
-Kathy Calvin*

If you or your institution is interested in providing a scholarship to the 2027 NNEC, please contact Katherine Brown-Saltzman at brownsaltzman@gmail.com.