

ETHICS[®]

of Caring

NNEC

4th NATIONAL
NURSING
ETHICS
CONFERENCE

Shaping the Ethical Environment

March 23-24, 2017
UCLA Luskin Conference Center
Los Angeles, CA

www.ethicsofcaring.org

Welcome & Description

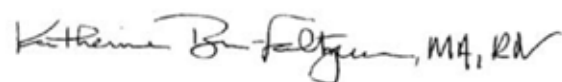
Program Planning Committee

Welcome to Los Angeles!

On behalf of the members of the 2017 Planning Committee, we want to congratulate you on joining us for the fourth National Nursing Ethics Conference, for we understand what it takes for you to make this happen. For over a year, we have been planning for your arrival, trusting that nurses across the country would commit to learning more about ethics, thereby improving healthcare for patients and their families, colleagues, institutions and certainly and very importantly, for themselves. We have experienced how this conference not only provides education and skills, it affords the opportunity to reflect and replenish, to grow together, and to strengthen our professional values.

The Ethics of Caring®, a non-profit organization, has dedicated itself to ethics education for nurses for 23 years. That mission stems from our own clinical experiences and appreciating the challenges of addressing ethical concerns in a thoughtful and effective way. Our theme this year is proactive -- Shaping an Ethical Environment. It is perhaps lofty, yet we believe that knowledge, collaboration and understanding pave the way to influencing the world around us. May your time in Los Angeles be especially rewarding as you enjoy an early spring in what was a parched land, land that has finally experienced an abundance of rain and is coming into full bloom.

Warm regards,



Katherine Brown-Saltzman, MA, RN
Co-director, UCLA Health Ethics Center
President, Ethics of Caring®
Co-Chair, NNEC 2017 Planning Committee



Heather Fitzgerald, MS, RN
Clinical Nurse Ethicist
Children's Hospital Colorado
Co-Chair, NNEC 2017 Planning Committee

Conference Description

Shaping an Ethical Environment is the theme for the 4th Ethics of Caring® National Nursing Ethics Conference (NNEC). Nurses are actively engaged in influencing the processes and actions that create ethical environments and directly impact the nurse, the delivery of care, inter-professional collaboration and ultimately, patient outcomes. Recognizing that nurses' voices are required to participate in shaping those environments, the conference will emphasize the development of skills needed to manage ethical dilemmas and to enhance practice and leadership.

Over the course of this two-day immersive and interactive journey, a variety of influences on and in the healthcare environment will be explored that can affect the nurse's actions and efforts to do the right thing for the right reasons.

The first day will examine The Difference We Each Can Be and Make and how to maintain balance and resiliency in the process. The issues that will be covered include ways of improving the ethical culture through a concept of precision nursing, speaking up and the power of narratives. The second day we will focus on Navigating Ethical Challenges. The emphasis will be on identifying ways to support the highest professional standards of nursing practice and ethically grounded care in situations that challenge one's values and core beliefs. Some of the topics to be addressed include care of the seriously ill and dying, physician assisted death, dementia, decision making, and challenges related to innovative treatment and technology. Poster sessions will highlight research and innovation in the field. Case presentations and breakouts will engage discussion. Colleagues are encouraged to bring their experiences, expertise, challenges and voices to enrich the dialogue. Patients, families, and healthcare professionals thrive when there is a strong ethical environment; with skill and collaboration nurses can help make that happen.

“What you do makes a difference
and you have to decide
what kind of a difference you want to make.”-Jane Goodall

Katherine Brown-Saltzman,* MA, RN (NNEC Co-Chair)
UCLA Health
President, Ethics of Caring®

Heather Fitzgerald, MS, RN (NNEC Co-chair)
Children's Hospital Colorado

Brenda Barnum,* BSN, MA, RN
Children's Hospital Los Angeles

Jennifer L. Bartlett, PhD, RN-BC, CNE, CHSE
Georgia Baptist College of Nursing
Mercer University - Atlanta, Georgia

Elissa Brown,* MSN, RN, PMHCNS-BC
Vice-President, Ethics of Caring®

Janine-Mariz Burog, MSHA
UCLA Health

Maureen Cavanagh, MS, MAHCM, RN, C-EFM
St. Peter's Health Partner's – Albany, New York

Anna Dermenchyan,* RN, BSN, CCRN-K
UCLA Health

Theresa S. Drought,* PhD, RN
Kaiser Permanente, Woodland Hills Medical Center

Katherine DuBois, MSN, RN-BC
Children's National Health System
NW Washington, DC

Beverly Fairbairn,* RN
Co-founder, Ethics of Caring®

Kathleen Feldman, MSN, RN
UCLA Health

Rev. Timothy Godfrey, SJ, DNP, RN, PHCNS-BC
University of San Francisco

Linda Gorman,* MN, RN, CHPN, FPCN
Secretary, Ethics of Caring®

Joan Henriksen, PhD, RN
Mayo Clinic – Rochester, Minnesota

Angela Knackstedt, RN-BC, BSN
Children's Mercy – Kansas City

Lydia Limenes RN, CCM
Cedars-Sinai Medical Center – Los Angeles, California

Donna McKlindon, MSN, RN, PMHCNS-BC
Children's Hospital of Philadelphia

Douglas P. Olsen, PhD, RN
Michigan State University, College of Nursing

Karen Pavic-Zabinski,* PhD, MSN, MBA, RN, MAMS
Providence Health & Services, Southern California

Ellen Robinson, RN, PhD
Massachusetts General Hospital

Carol Taylor, PhD, MSN, RN
Georgetown University – Washington, DC

Mary K. Walton, MSN, MBE, RN
Hospital of the University of Pennsylvania

* Ethics of Caring® member



Conference Hotel

UCLA Luskin Conference Center
425 Westwood Plaza
Los Angeles, CA 90095
(855) LCC-UCLA (522-8252)
<http://luskinconferencecenter.ucla.edu/>

Parking

Parking Structure 8 - Access to Luskin via bridge Level 4

Day Parking - Level 3 - \$12 cash

Attendants 6:00-8:00 AM to purchase permit

Credit card available Level 4 Pay Station

After 8 AM go to Parking Kiosk on Westwood Blvd

Overnight Parking - Parking Structure 8 Level 4 Pay Station

Arriving 3/22 select 2 night option \$56/ valid 8 PM 3/24

Arriving 3/23 select 1 night option \$28/ valid 8 PM 3/24

Valet parking - Luskin Conference Center \$39/night

Registration

Wednesday, March 22nd 3–5pm, Prodigy Room, 2nd floor

Thursday, March 23rd begins 6 am, Centennial Ballroom 1st floor

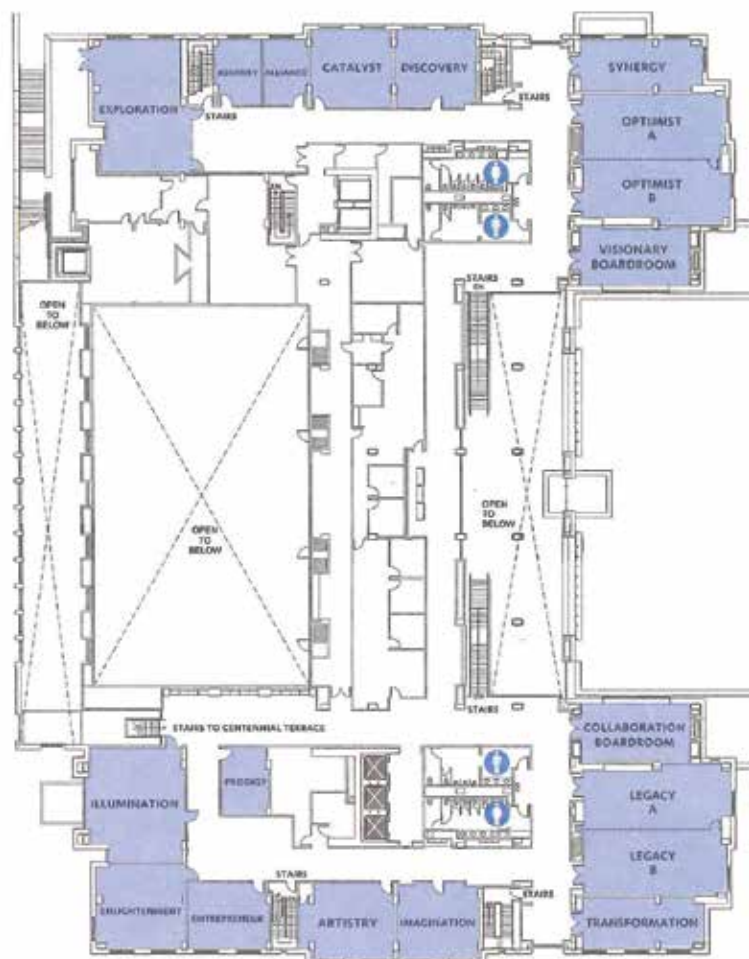
Friday, March 24th begins 6:15 am, Centennial Ballroom 1st floor

Conference Meals

Full Breakfast Buffet: Thursday and Friday

Lunch Buffet: Thursday and Friday, join us on the Centennial Terrace

Breakout Rooms, 2nd floor



Continuing Education Guidelines

UCLA Health is accredited as a provider of continuing nursing education by the American Nurses Credentialing Centers Commission on Accreditation. Nurses will be awarded 8.25 ANCC contact hours for participation in 1-day of the conference or 16.5 ANCC contact hours for participation in 2-days of the conference.

Provider approved by the California Board of Registered Nursing, Provider Number 12511 for 9.5 contact hours for participation in 1-day of the conference or 19.5 contact hours for participation in 2-days of the conference.

Conference Objectives

1. Explore methods to maintain balance and resiliency as practicing nurses in healthcare.
2. Describe concrete ways to speak up individually and collectively as a profession to create an ethical environment.
3. Value the power of narratives in articulating the challenges associated with shaping the ethical environment in healthcare.
4. Analyze situations that illustrate an ethical response in cases where capacity is a factor and the practical application of a toolkit for addressing concepts associated with physician assisted death.
5. Identify actions that support the professional standards of nursing and ethically-grounded care.
6. Reflect on known and emerging ethical challenges such as end-of-life care, assisted suicide, and the introduction of innovative therapies and technology.

Successful Completion

To receive contact hours for this learning activity, a participant must:

- Be registered for the activity & pay any required fees
- Be present no later than 5 minutes from the start of the learning activity & attend the entire learning activity
- Complete and electronically submit the session and program evaluation forms

Evaluations & Awarding of Contact Hours

Electronic evaluations and contact hour certificates will be emailed to participants a few days following the conference. Please be mindful to check spam folders to ensure you do not miss the email.

Conflicts of Interest

The planners and presenter(s)/author(s) of this CE activity have disclosed all relevant financial, professional, or personal relationships with any commercial companies pertaining to this activity. When a potential conflict of interest exists, it will be disclosed at the beginning of the individual session.



Jennifer L. Bartlett, PhD, RN-BC, CNE, CHSE, an Assistant Professor of Nursing at Georgia Baptist College of Nursing of Mercer University, earned her PhD in Nursing - with a focus in Nursing Education - from the University of Nevada, Las Vegas. Dr. Bartlett has presented nationally and internationally on the subject of nursing ethics. She completed a two-year program in clinical ethics consultation at Bon Secours Richmond and served on their Ethics Committee. Dr. Bartlett has a global perspective she gained through her experience as a simulation consultant in the Middle East (Oman), where she developed simulation training tailored to meet the needs of that faculty. Dr. Bartlett is a Certified Healthcare Simulation Educator with extensive experience in the development, implementation, and evaluation of simulation across the nursing continuum.

Katherine Brown-Saltzman, MA, RN, is the Co-Director and co-founder of the UCLA Health Ethics Center and an Assistant Clinical Professor at the UCLA School of Nursing. She received a BSN from Marquette University and MA from Lesley College. Her current area of research highlights early indicators and risk factors in ethical issues and interdisciplinary collaboration in addressing ethical concerns. She has developed interdisciplinary programs on sustaining self-care, moral distress, and collaborated in creating a clinical ethics fellowship. She has been a co-investigator in ethics grants from AACN, ONS, Sigma Theta Tau, NIG, and PCORI. Participating on three ethics committees. Katherine co-chairs the UCLA Medical Center's Committee. Katherine is the co-founder and president of Ethics of Caring®, She lectures nationally and internationally and has over 30 publications and book chapters.



Ira Byock, MD, is a leading palliative care physician, author, and public advocate for improving care through the end of life. He is Founder and Chief Medical Officer of the Institute for Human Caring of Providence Health and Services, based in Torrance, CA which advances efforts to measure, monitor and improve person-centered care across the 7 state Providence St. Joseph Health system. Dr. Byock is Active Emeritus Professor at Dartmouth's Geisel School of Medicine and served as Director of Palliative Medicine at Dartmouth from 2003 through 2013. Dr. Byock has authored numerous articles on the ethics and practice of care. His books include, *Dying Well*, (1997) which is a standard in the field of hospice and palliative care, *The Four Things That Matter Most*, (2004) and *The Best Care Possible* (2012).

Anna Dermenchyan, RN, BSN, CCRN-CSC, is a Senior Clinical Quality Specialist in the Department of Medicine at UCLA Health and is a 2nd year PhD student at the UCLA School of Nursing. Anna started her nursing career in the Cardiothoracic ICU at the RR UCLA Medical Center where she cared for the transplant and surgical patient population for five years. Currently, Anna leads, and implements improvement initiatives in the areas of hospital readmissions, mortality reduction, and population health management. Her research interest includes evaluation of self-management support programs for heart failure patients. Her professional interests include leadership, health care ethics and policy, quality and patient safety, critical care, and global health. Anna has presented nationally, and internationally on clinical, professional development, and networking topics.



Theresa S. Drought, PhD, RN, is Director of Medical Bioethics at the Kaiser Permanente Woodland Hills Medical Center. She is a graduate of Merritt College (ADN), and the University of California, San Francisco for her bachelor's master's and doctorate degrees. She has worked in clinical ethics since 1992, training and chairing several hospital ethics committees and serving on local, state and national task forces. Her scholarship addresses issues of professionalism, bioethics, and end-of-life care, especially decision making by stranger surrogates. She was a member of the founding steering committee for the Coalition for Compassionate Care and has served as consultant and faculty on many of their programs.

Heather Fitzgerald, MS, RN, is the Clinical Nurse Ethicist at Children's Hospital Colorado. Her clinical background is in the neonatal ICU. Participation in both unit-based and hospital-wide ethics committees at Children's Hospital Colorado led to a Master's of Science in Healthcare Ethics. Prior to her nursing career, Heather produced theatre for 17 years, providing a balanced background in both the humanities and the sciences. This supports her well in ethics education, consultation and policy review and development in clinical settings throughout the hospital system. Heather co-chairs the Ethics Committee and chairs the Ethics Liaisons Committee at Children's Colorado. She is a member of the ethics faculty for the Center for Bioethics and Humanities at the University of Colorado. Heather speaks regionally and nationally on ethical issues in the care of pediatric patients and their families.



Arthur Frank, PhD, works at the intersection of health humanities, narrative ethics, and narrative therapy. He is the author of *At the Will of the Body*, a memoir of illness experience. His later books include *The Wounded Storyteller* (1995; second edition 2013), *The Renewal of Generosity*, and *Letting Stories Breathe*. Among other honors, he received the 2016 Lifetime Achievement Award from the Canadian Bioethics Society. He lives in Calgary, Alberta.

Maribeth Gallagher, DNP, PMHNP-BC, FAAN, is a board-certified Psychiatric Nurse Practitioner with a Doctor of Nursing Practice degree. She is the Director of the Dementia Program at Hospice of the Valley in Phoenix and served on the Advanced Dementia Expert Panel at the Institute of Medicine in Washington, D.C. for the National Alzheimer's Project Act. Dr. Gallagher's commitment to optimizing dementia care was initially inspired by her own experiences as a family caregiver, sharing the journey with her loved one with dementia from diagnosis to death.



Rev. Timothy Godfrey, SJ, DNP, RN, PHCNS-BC, is a Jesuit priest and public health nurse who is currently a full-time Assistant Professor in the School of Nursing and Health Professions at the University of San Francisco (USF), teaching community health nursing as well as ethics and social policy. Tim has worked as a public health nurse in East St. Louis, IL, as pastor of St. Patrick Parish in West Oakland, CA, and as director of Campus Ministry at Georgetown University. Tim served on the Steering Committee for the 2015 revision of the ANA *Code of Ethics for Nurses*, and teaches nursing and health care ethics to both undergraduate and graduate nurses at the University of San Francisco.

Faculty

Linda M. Gorman, RN, MN, PMHCNS-BC, CHPN, FPCN, is a Clinical Nurse Specialist in palliative care. Linda was part of an in-patient palliative care consultation team at Cedars-Sinai Medical Center in Los Angeles for over 20 years where she provided palliative, home hospice and end of life care services to patients. She retired in 2011. She is co-author/editor of several books including *Psychosocial Nursing Care Along the Cancer Continuum*, *Psychosocial Nursing for General Patient Care*, *Neb's Fundamentals of Mental Health Nursing and Compendium of Treatment of End Stage Non-Cancer Diagnoses: Renal*. She has written multiple book chapters in palliative care publications. She served on the Board of Directors of the Hospice and Palliative Nurses Association from 2000-2006 and served as President in 2005. She also served on the board of the Hospice and Palliative Nurses Foundation and was president from 2011-12.



Ann Hamric, PhD, RN, FAAN, is a retired Professor and former Associate Dean for Academic Programs at Virginia Commonwealth University School of Nursing. She graduated from Vanderbilt University (BSN), the University of California, San Francisco (MS), and the University of Maryland, Baltimore (PhD). She has two areas of scholarship: advanced practice nursing and ethics and is editor of seven books; five on advanced practice nursing and two on the CNS role. Dr. Hamric has served on five ethics committees, and currently is a member of VCU Health System's Ethics Committee. She has developed and taught ethics courses at all levels and has worked with inter-professional teams to develop courses and study research ethics. Her research has focused on moral distress, including the first quantitative study of moral distress in physicians. In 2008, she was awarded the "Substantive Contribution to Nursing Ethics" from the ASBH Affinity Group for Nursing. She is currently the co-Chair of the Bioethics Expert Panel of the American Academy of Nursing.

Joan Henriksen, PhD, RN, is the Coordinator of the Clinical Ethics Consult Service at the Mayo Clinic in Rochester, MN. Joan manages the daily operations of the consult service team, including bedside consultation, ethics education, and clinical ethics research. She earned her PhD from the University of Iowa in Religious Studies with a focus on health care ethics. She is a registered nurse of 22 years and has worked in pediatrics, infusion therapy, and clinical education. Joan has taught ethics and ethical decision-making to undergraduates through working physicians and nurses. Her research interests include teamwork, conscientious practice, and professional virtues.



James Hynds, PhD, LLB, MTh, is the Senior Clinical Ethicist at UCLA Health Ethics Center, Director of the Clinical Ethics Fellowship Program, Vice Chair of the UCLA Santa Monica Hospital Ethics Committee and Visiting Assistant Professor of Medicine at the David Geffen School of Medicine at UCLA where he directs the comprehensive ethics curriculum. He comes from Glasgow, Scotland where he graduated from Law School at the University of Glasgow. He went on to study philosophy and theology at Blackfriars Hall, Oxford University, later receiving a Master degree in theology and the Post-Graduate Certificate in Education from the University of Glasgow. In 2000, he received his Ph.D. in Healthcare Ethics from St. Louis University, Missouri. Dr. Hynds completed a Post-Doctoral Fellowship and thereafter a Senior Post-Doctoral Fellowship in Clinical Ethics at the Joint Centre for Bioethics at the University of Toronto, Canada.

Carma Erickson-Hurt, DNP, ACHPN, is a Clinical Nurse Specialist specializing in palliative care. She retired from the United States Navy in 2007 and now works as a consultant developing palliative care education. She also works per diem for a small hospice in Oregon. She has volunteered with Project HOPE in response to several international disaster responses and humanitarian missions.



Angela Knackstedt, BSN, RN-BC, is the Health Literacy / Bioethics Clinical Coordinator at Children's Mercy Kansas City. Her nursing career focused on bioethics, staff development, health literacy, and advocacy. In her current bioethics role, she is the co-director and core faculty for the Children's Mercy Certificate Program in Pediatric Bioethics, which is a 9-month certificate program for inter-disciplinary clinicians from all over the world. She is the director for the Nurse Leadership Program that works to develop or expand nursing ethics at their pediatric institutions. She co-chairs the Children's Mercy Nursing Ethics Forum which is the voice of nursing in ethics throughout the organization, and in the Kansas City metro area. Her work with community organizations has expanded an interest in the areas of health policy, ethics and social determinants of health.

Christine Mitchell, RN, MS, MTS, FAAN, received a BA and MS in Nursing from Boston University, as well as a Master's degree from Harvard where she majored in philosophical and religious ethics as a Kennedy Fellow in Medical Ethics. She founded the clinical ethics program at Boston Children's Hospital, directing the ethics consultation service and leading the Ethics Advisory Committee for 30 years. In 2014, she became Executive Director of the Center for Bioethics at Harvard Medical School. She has served on numerous national committees, including the American Society for Bioethics and Humanities' Clinical Ethics Consultation Committee, the Ethics Committee for the American College of Obstetricians and Gynecologists and the Ethics Management team for the European Human Brain Project. Her publications include a series of ethics cases for *The Journal of Clinical Ethics*, articles for the *AJN*, *NEJM*, the *Hastings Center Report*, and *Newsweek*, along with several documentary films, including Academy Award Nominated "Code Gray."



Douglas Olsen, PhD, RN, is currently an Associate Professor at the Michigan State University College of Nursing. Prior to that he was at the VA's National Center for Ethics in Health Care. There, he was a member of the national ethics consultation team, staff to the National Ethics Committee, and advisor to VA's Central IRB. Prior to VA, he taught health care ethics and psychiatric nursing for 13 years in Yale University's graduate nursing program. He is an Associate Editor of *Nursing Ethics* and contributing editor for ethics at *AJN*. He has taught ethics internationally and has over 40 peer-reviewed publications. His ethics expertise includes clinical relationships, behavioral health and research ethics.

Carol Pavlish, BS, MS, PhD, RN, FAAN, is currently an Associate Professor and Director of the Prelicensure Programs at the University of California Los Angeles, School of Nursing and Professor Emeritus, St. Catherine University, St. Paul, Minnesota. Her clinical background is in critical care and oncology. Carol researches refugee women's health and human rights in post-conflict settings. She also studies ethically complex clinical situations to develop techniques for mitigating ethical conflicts and addressing moral distress.



Marie-Josée Potvin, RN, MSc., PhD, is the Senior Clinical Ethics Fellow at the UCLA Health Ethics Center (2015-2017). She received both her BSN and MA from Laval University (Quebec) and completed her Ph.D. in Bioethics at the Faculty of Medicine, University of Montreal, in Canada. Her practice (clinical, public health) and 3-years of Zen meditation in Japan, culminated in research interests such as pain, suffering, conflict of interest (COI) and professional ethics, through the lens of phenomenology and moral psychology. She developed a tool for the WHO to address COIs in the context of catastrophes, co-conceived and co-directed a Canadian research network in ethics in population health and an international network in health promotion. Her research interests focus on the psychological processes underlying ethical behavior in the health professions, on clinical ethics along with self and identity development in the setting of professional ethics.



Christina Purpora, PhD, RN, is an Assistant Professor in the School of Nursing and Health Professions at the University of San Francisco. Prior to beginning her academic career, she practiced in hospitals for 30 years. Her program of research focuses on incivility, bullying, and horizontal violence in the healthcare work environment. She regularly presents educational programs on the topic at conferences and in academic and hospital settings. She has presented her research at conferences and published in peer reviewed journals internationally. She received her BS from Regis University, Denver, her MS from University of Hartford and her PhD in Nursing from UCSF.

Ellen M. Robinson, PhD, RN, has her MS and PhD in Nursing from the William F. Connell School of Nursing. Her dissertation focused on the surrogate decision-making for patients with advance dementia, received an NINR National Science Research Award. Completing an Ethics fellowship at Harvard, Ellen transitioned to Nurse Ethicist at Massachusetts General Hospital, providing ethics consultation and serving on the Children's Pediatric Ethics Committee and the Harvard Division of Medical Ethics Leadership Council. Ellen received a HRSA, Bureau of Nursing grant to develop and implement a Clinical Ethics Residency for Nurses, which mentored practicing staff and advance practice nurses in the process of ethics consultation. She is faculty at the Center for Bioethics at Harvard Medical School, and the schools of nursing at MGH and Boston College. Ellen's research focus is on the impact of ethics consultation on end of life conflict.



Cynda Rushton, PhD, RN, FAAN, is the Anne and George L. Bunting Professor Clinical Ethics at the School of Nursing and Berman Institute of Bioethics of Johns Hopkins University, with a joint appointment in the School of Medicine's Department of Pediatrics. She serves as co-chair of the Johns Hopkins Hospital's Ethics Consultation Service since 1999. She Co-Directed the National Nursing Ethics Summit, hosted at Hopkins in 2014 and more recently, the National Transforming Moral Distress into Moral Resilience Symposium with the American Journal of Nursing and Journal of Christian Nursing. Dr. Rushton received her Master's of Science in Nursing, with specialization as a pediatric CNS, from the Medical University of South Carolina. She completed her undergraduate degree in nursing at the University of Kentucky and received a doctorate in nursing at the Catholic University of America, with a concentration in bioethics. Dr. Rushton is the recipient of three post-doctoral fellowships: a Robert Wood Johnson Nurse Executive Fellowship, a Kornfeld Fellowship in end-of-life, ethics and palliative care, and a Mind and Life Institute Fellowship in Contemplative Science.

Cindy Sayre, PhD, ARNP, is the Chief Nursing Officer at the University of Washington Medical Center. Previously she served as Associate Administrator of Patient Care Services at the medical center, supporting the Shared Governance structure along with Patient and Family Centered Care. Cindy has partnered with Dr. Sarah Shannon and other nursing leaders to introduce concepts and tools related to attachment theory to nurses at the medical center.



Sarah E. Shannon, PhD, RN, is Sr. Associate Dean for Academic Affairs and professor in the School of Nursing at Oregon Health Sciences University. Formerly, she was faculty in the Dept. of Biobehavioral Nursing & Health Systems in the School of Nursing and was adjunct in the Dept. of Bioethics & Humanities in the School of Medicine at the University of Washington (UW). She was also chief of the ethics consult service for Northwest Hospital and Medical Center and an ethics consultant for UW Medical Center. She earned her BSN in nursing from University of Arizona and PhD and MS in nursing science from UW. Her research focuses on improving communication between healthcare teams and patients and their families around ethically challenging issues, specifically end-of-life decision-making, error disclosure, and inter-professional conflict. She has taught ethics for 20 years and been an investigator on multiple NIH and AHRQ grants.

Carol Taylor, PhD, RN, is a Sr. research scholar in the Kennedy Institute of Ethics at Georgetown University and a Professor of Nursing. Carol teaches in the undergraduate nursing program, directs a practicum in clinical ethics for graduate students in the philosophy program, serves on the ethics committee, conducts ethics rounds, and develops seminars in clinical ethics for healthcare professionals and the public. Her research interests include clinical and professional ethics, and organizational integrity. Carol has a PhD from Georgetown University and a Master's Degree in Medical-Surgical Nursing from Catholic University. A frequent international writer and speaker, she serves as an ethics consultant to systems and professional organizations. Carol has authored *Fundamentals of Nursing: The Art and Science of Nursing Care*, *Health and Human Flourishing: Religion, Medicine and Moral Anthropology*, and *Case Studies in Nursing Ethics*.



Mary Walton, MSN, MBE, RN, is the Director of Patient and Family Centered Care and Nurse Ethicist at the Hospital of the University of Pennsylvania and Adjunct Assistant Professor of Medical Ethics and Health Policy, Perelman School of Medicine, University of Pennsylvania. She received her BSN and MSN from the University of Pennsylvania and earned a master of bioethics degree and a certificate in clinical ethics mediation from the University of Pennsylvania School of Medicine. Her clinical practice includes providing care to children with chronic health issues. She has provided leadership for two ethics committees and ethics consultation services. Currently she is responsible for organizational initiatives focused on clinical ethics and improving the patient and family experience of care. She co-chairs a hospital-based Patient and Family Advisory Council and leads QI efforts to support person-centered care and patient engagement. She has published in the numerous areas including advocacy, healthy work environment, and clinical ethics.

Schedule

Day 1 **March 23, 2017**
The Difference We Each Can Be and Make

6:00-7:00 **Wellness Option: Campus Guided Walk (Optional)** • Hotel Lobby

6:00-8:00 **Registration** • Centennial Hallway

6:15-7:45 **Breakfast Buffet** • Centennial Hallway

7:45-8:00 **Welcome** • Centennial Ballroom • Katherine Brown-Saltzman

8:00-9:30 **001 • Keynote • Ethical Practice through Precision Nursing: Reconceptualizing “Difficult” Patients as Vulnerable Individuals**
Centennial Ballroom
Sarah Shannon
Description: What type of damage are we doing when we label our patients as “difficult?” Take an in-depth look into the dynamics occurring around this phenomenon and explore strategies that enhance your ethical practice and patient outcomes.

9:30-10:00 **Poster viewing • Refreshments served**
Pinnacle, Odyssey, Pathways, and Innovation • 1st Floor

10:00-11:15 **002 • Plenary • Creating Shared Moral Communities Through Early Ethics Assessment & Intervention**
Centennial Ballroom
Carol Pavlish, Katherine Brown-Saltzman, Joan Henriksen, Ellen Robinson
Description: In this session, you will work to gain a deeper understanding of the role communication plays in effectively identifying and addressing ethical issues within the clinical environment. We will also analyze a variety of educational tools and strategies that can be utilized in a variety of healthcare settings to strengthen shared moral communities.

11:15-12:30 **003 • Case Discussion One: A Patient Without Capacity: Assessing and Prompting an Ethical Response**
2nd Floor Breakout Rooms (same as afternoon breakout session locations)
All faculty and planning committee members
Description: In small groups you will have the opportunity to practice skills needed to effectively address the complex ethical situations that arise in the current healthcare environment. Come, listen, contribute to the conversation, and increase your comfort and skill in addressing interprofessional, clinical, and organizational ethical issues.
Objectives:

- Discuss capacity issues and how they impact on clinical situations.
- Identify some early indicators and risk factors of ethical issues in the case.
- Identify key strategies used to address ethical issues that involve issues related to capacity.

12:30-1:30 **Lunch** • Alfresco on the Centennial Terrace • 3rd floor

1:30-3:15 **Breakout sessions • 2nd Floor**

004 • Cultivating Moral Resilience
Optimist A • Cynda Rushton
Description: Moral resilience is gaining acceptance as a way to effectively manage the distress felt by many who work directly within patient care. Learn strategies that change the paradigm & focus on empowerment and resiliency, instead of powerlessness & despair.

005 • Ethical Complexities of Pediatric Nursing Care
Illumination • Christine Mitchell
Description: This session will focus on a case-illustrated discussion illuminating what makes navigating ethical issues with surrogate decision makers so challenging. We will also discuss where the nurse is located in the midst of these situations.

006 • Incivility and Bullying in Nursing: Defining and Mitigating the Elephant in the Room (Part 1)
Optimist B • Christina Purpora
Description: Take an in-depth look at the incivility, bullying, and workplace violence happening in all practice settings, and the effects it is having on healthcare workers and their patients. It is a serious issue facing our profession and one that must be addressed. Hear about evidence-based strategies being used to help minimize and alleviate this damaging behavior.

007 • Three Vital Questions: Practical Tools for Advocacy and Resiliency
Enlightenment • Heather Fitzgerald
Description: As patient advocates, we can both heartily embrace this professional obligation and at the same time experience drama, reactivity, and challenging dynamics that may confine our advocacy. We can become focused on what we don't want (problems and discord), and struggle to achieve what we want: grounded advocacy for patient well-being and promotion of ethical environments. Three Vital Questions is a simple tool to make positive shifts in how we see ourselves and others, contributing to effective advocacy, resiliency, and empowerment in work and life.

008 • Case Studies in Precision Nursing: Ethics Consults for “Difficult” Patients
Exploration • Sarah Shannon and Cindy Sayre
Description: In providing care, there are times that we encounter patients and families that we label as “difficult.” This interactive session will utilize case studies, group discussion, and literature review to identify key strategies, based on adult attachment styles, that nursing and healthcare teams can utilize to improve ethical and biopsychosocial outcomes of patients and families.

009 • Health Equity & Disparity
Catalyst • Carol Taylor
Description: The media in the U.S. is rife with stories about race-related killings. After ISIS killings in Paris, San Bernadino, and Orlando there were many calls for the U.S. to refuse all refugees from Syria and many Muslims experienced expressions of hatred. To what degree are the differences that divide us as members of society influencing the way we relate to and care for one another in health care? This timely session will provide an opportunity to review U.S. findings about health disparities, reflect on personal experiences, and identify strategies to eliminate disparities.

010 • Ethics: Building Basic Skills
Synergy • Jennifer Bartlett and Angela Knackstedt
Description: Nurses encounter ethical issues and dilemmas in everyday practice. This session will focus on differentiating classical ethical dilemmas from other issues in the clinical setting and provide a working vocabulary of terms frequently used in these situations. We will explore models for analyzing ethical issues and focus on providing you with viable tools you can use in your daily clinical practice.

3:15-3:30 **Break • Refreshments Served** • Centennial Hall • 1st Floor

Schedule

Day 1 March 23, 2017 The Difference We Each Can Be and Make (Continued)

- 3:30-4:30** **011 • Closing • Empowering Narrations: Care as Enabling Stories that Heal**
Centennial Ballroom
Arthur Frank
Description: Stories bring meaning to and enhance the care we provide patients and families. But what do stories provide us as nurses and health care professionals? This session will encourage us to facilitate empowering narratives as an ethical connection to our patients and our practice while building resilience in nursing.
- 4:30-5:15** **012 • Recognizing a Nursing Ethics Leader: A Conversation with Ann Hamric**
Centennial Ballroom
Ann Hamric & Katherine Brown-Saltzman
Description: This special interview will showcase the expertise and experience of an exemplary nursing ethics leader, Ann Hamric, whose passion and resilience in nursing inspired many over the years through leadership, vision, and her passion to define moral distress and its impact on healthcare. Her insight will inspire nurses to shape their own practice through ethical discussions, passion, and resilience.
- 5:15-6:30** **Award Reception • Centennial Terrace • 3rd Floor**
Poster Viewing • Pinnacle, Odyssey, Pathways, and Innovation • 1st Floor



Day 2 March 24, 2017 Navigating Ethical Challenges

- 6:00-7:00** **Wellness Option: Yoga (Optional) • Legacy A & B**
- 6:15-7:45** **Registration and Breakfast Buffet • Centennial Hallway**
Poster Viewing (No presenters available) • Pinnacle, Odyssey, Pathways, & Innovation • 1st Floor
- 7:45-8:00** **Welcome • Centennial Ballroom • Heather Fitzgerald**
- 8:00-9:15** **013 • Keynote • Nurses' Stance Amidst Ethical Dilemmas**
Centennial Ballroom
Christine Mitchell
Description: This session will describe how dilemmas are different from "problems," and discuss how to engage dialogue while demonstrating moral courage and moral agency to come through ethical dilemmas with integrity intact. Despite anguishing circumstances and the challenges inherent in caring for patients, it is possible to recognize everyone's best efforts.
- 9:15-9:45** **Poster viewing • Refreshments Served**
Pinnacle, Odyssey, Pathways, and Innovation • 1st Floor
- 9:45-11:00** **014 • Panel Discussion: Ethical Reflections on Physician-Assisted Death**
Centennial Ballroom
Doug Olsen, James Hynds, Timothy Godfrey, & Carma Erickson-Hurt
Description: The issue of physician-assisted death can cause ethical dilemmas for nurses as well as their patients and families. The panel discussion will focus on three broad ethical concerns regarding physician-assisted death, as well as identify ethical dilemmas that nurses have experienced in the state of Oregon, where this practice has been legal since PAD was enacted in 1997. Finally, the panelists will offer different ethical approaches to assist conference participants with their own values clarification.
- 11:00-11:15** **Poster viewing**
Pinnacle, Odyssey, Pathways, and Innovation
1st Floor
- 11:15-12:15** **015 • Case Study Two: Physician-Assisted Death: Discussion & Toolkit**
2nd Floor Breakout Rooms
(same as afternoon breakout session locations)
All faculty and planning committee members
Description: In small groups you will have the opportunity to practice skills needed to effectively address the complex ethical situations that arise when addressing PAD. Come, listen, contribute to the conversation, and increase your skill in addressing values clarification, inter-professional, clinical, and organizational ethical issues.
Objectives:
 - Describe current social, political, and medical discussions regarding PAD.
 - Describe current tools available to nurses.
 - Explore personal and professional thoughts and feelings surrounding the issues inherent in PAD.
- 12:15-1:15** **Lunch Buffett • Alfresco on the Centennial Terrace**

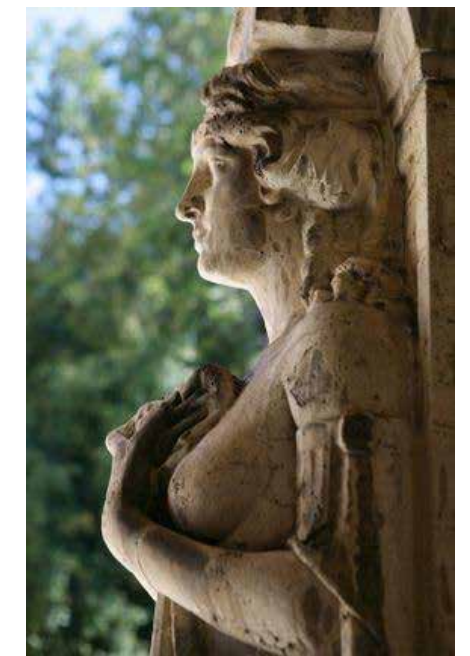


photo credit: Reed Hutchinson

Schedule

Day 2 March 24, 2017
Navigating Ethical Challenges (Continued)

1:15-3:00 Breakout sessions • 2nd Floor

016 • Abstracts of Distinction: Promising Practices: Innovative Interventions
Enlightenment

Description: Three poster presenters were selected to discuss their work in this session. Join these three outstanding poster presenters to learn more about their work:

Lezley Anderson & Birgitta Sujdak-Mackiewicz

High-fidelity simulation for unit and ethics committee education: A multidisciplinary approach

Ellen M. Robinson, Susan M. Lee, Pamela J. Grace, Martha Jurchak, & Angelika A. Zollfrank
Outcomes of the clinical ethics residency for nurses

Lori Hodge, Susan Hernandez, Shelley Brown-Cleere, & Michael Rubin

NoMMaD: A unique approach to a healthy work environment by minimizing the harmful effects of moral distress

017 • Navigating Moral Distress: How Can We Best Intervene?

Legacy A & B • **Ann Hamric**

Description: Moral distress and its impact on healthcare is more evident than ever before. Through this didactic and interactive session, we will illustrate how to address moral distress by identifying the root causes in our own environments and developing strategies to promote an ethical environment.

018 • Honoring Personhood in Advanced Dementia: Ethical Considerations for Humane & Dignified Care

Artistry • **Maribeth Gallagher**

Description: While we often hear about the overall impact of dementia on patients, family, & the healthcare team, this session will focus on the common related ethical challenges in providing humane & dignified care. Evidence-based methods for healthcare team members to use in supporting caregivers of patients with advanced dementia will be discussed. Best practices for palliative dementia care, including realistic care options, environmental, sensory and spiritual factors, & collaborative care approaches will be described.

019 • A Moral Psychology Perspective to Support Nurses' Ethical Decision-making in Practice

Illumination • **Marie-Josée Potvin & Anna Dermenchyan**

Description: Moral competencies within the healthcare environment are necessary skills all care providers must acquire and foster. In this session, the participants will explore how the Rest Four Component Model (FCM) supports one's ability to identify, analyze, and act upon ethical problems in the clinical setting. Learn, from a psychological perspective, how and why ethical sensitivity, judgement, motivation, and implementation must be integrated by care providers to result in the recognition of ethical issues, right decision making, and action.

020 • Physician-Assisted Death: Nurses' Experiences and Ethical Implications

Optimist B • **Carma Erickson-Hurt, Linda Gorman, & Theresa Drought**

Description: This session will provide an opportunity for attendees to examine issues that affect nurses surrounding physician-assisted death. These include identifying the nurse's role and the potential ethical dilemmas, as well as strategies and resources to support the nurse caring for a patient who is considering physician-assisted death. Case studies and group discussion will be used along with sharing of experiences of nurses in Oregon.

008 • Case Studies in Precision Nursing: Ethics Consults for "Difficult" Patients

Exploration • **Sarah Shannon and Cindy Sayre**

Description: In providing care, there are times that we encounter patients and families that we label as "difficult." This interactive session will utilize case studies, group discussion, and literature review to identify key strategies, based on adult attachment styles, that nursing and healthcare teams can utilize to improve ethical and biopsychosocial outcomes of patients and families.

021 • Responding to Incivility and Bullying in Professional Practice: Living Our Code of Ethics (Part 2)

Optimist A • **Mary Walton**

Description: Bullying behaviors with nurses have gained national attention because of the cost both emotionally and financially to individuals and their organizations. This interactive session will explore the ethical dimensions of bullying and lateral violence, and begin to identify approaches to engage unit-based leadership in prevention strategies based on the ANA Position Statement on Incivility, Bullying, and Workplace Violence.

3:00-3:15

Break • Refreshments Served • Centennial Hall • 1st floor

3:15-4:00

022 • A Report on the National Nursing Ethics Symposium: Moral Resilience Initiative

Centennial Ballroom

Cynda Rushton

Description: Nurses everywhere experience moral distress. In August 2016, leaders in nursing ethics engaged in a National Nursing Ethics Symposium focused on developing a Moral Resilience Initiative. This presenter will address the history and goals of this national nursing symposium, and provide definitions of key terms including moral distress and moral resilience. Strategies will be shared for building individual moral resilience, and for the broader picture of building a culture of ethical practice.

4:00-5:15

023 • Closing • Nursing Principles and Practice: The Roots & Future of Human Caring Through the End of Life

Centennial Ballroom

Ira Byock

Description: The need to recognize the basic nursing principle of inherent human dignity will be discussed in this session. The personal aspects of illness, dying, caregiving, and grieving will be a key focus. In order to facilitate providers' abilities to engage patients in life completion activities that foster well-being, this presenter will describe how to involve patients in resolving difficult relationships, sharing grief, and "saying four things before goodbye."

5:15-5:30

Evaluations and Closing Comments • Centennial Ballroom

024 • Poster Sessions

Pinnacle, Odyssey, Pathways, and Innovation • 1st Floor

Description: Nurses need to continue to explore key knowledge, skills, & attitudes in order to enhance the incorporation of everyday ethics into their routine nursing practice. Posters will specifically address issues outlined in the program objectives. The purpose of this activity is to provide specific examples and insight into how the learner can integrate everyday nursing ethics into practice.



Poster Sessions

1. Experience with a Hospital Policy on Not Offering Cardiopulmonary Resuscitation When Believed More Harmful than Beneficial

Andrew C. Courtwright, Sharon Brackett, Eric L. Krakauer, Cornelia Cremens, Wendy Cadge, & Ellen M. Robinson - Massachusetts General Hospital

2. Rapid Review of Resuscitation- a Debriefing Tool Utilized in the Pediatric Intensive Care Unit

Courtney Nerovich - Ann and Robert H. Lurie Children's Hospital of Chicago

3. Addressing Moral Distress in Critical Care Nurses

Rose Allen & Eve Butler - Baptist Health South Florida & Baptist Hospital of Miami

4. An Innovative Course in Values Clarification and Self-discovery: Experiences in an Accelerated BSN Program

Lisa Day & Anna Derouin - Duke University

5. Application of the ANA Code of Ethics to Genetic/ Genomic Nursing

Laura Curr Beamer, Audrey Tluczek, Marie E. Twal, Leslie Darmofal, Mary Kracun, Karen L Zanni, & Martha Turner - Northern Illinois University, DeKalb, IL, University of Wisconsin, Madison, WI, Indiana University of Pennsylvania, Indiana, PA, Bemidji State University, Bemidji, MN, National University, San Diego, CA, SUNY Empire State College, Saratoga Springs, NY, American Nurses Association, Silver Spring, MD; Uniformed Services University, Bethesda, MD

7. Chemotherapy treatment: Who gets to decide? An ethical dilemma for oncology nurses

Sarah Summer, Deanna Schlifke, & Nancy Loporchio - Providence Saint Joseph's Medical Center & Providence Saint Joseph's Medical Center/Disney Family Cancer Center

8. Compassion an element of ethical and nursing care: Results of a compassion survey of nurses and other healthcare providers

Maria Masina & Jennifer Colwill - Cleveland Clinic

9. Concept Analysis: Disenfranchised Grief

Ayesha Walden - St. Jude Medical Center

10. CPR for the Soul: An Initiative to Address Compassion Fatigue in The Clinical Care Team

JoAnne Auger - Rady Children's Hospital

11. Creating a PICU Ethics Forum: An Inter-professional Progression from Conversation to Bedside

Charlotte Smardo, Tiffany Mullen, & Laura Miller-Smith - Children's Mercy Hospital and Clinics, Children's Mercy, Children's Mercy Hospital

12. Cultural Awareness of the Academic Nurse Educator
Maureen Hermann - St. Francis Medical Center College of Nursing

13. Developing a program to support nursing ethics in a pediatric hospital

Kristi Klee, Catherine Rea, & Leah Kroon - Seattle Children's Hospital

14. Does Race Impact Nurses' Perception of Ethical Climate?
Donna Lemmenes, Pamela Valentine, & Patricia Gwizdalski - University of Chicago Medicine & University of Chicago

15. Don't Repaint, Restore: A Makeover for Ethics Education
Art Signo - Baylor Heart & Vascular Hospital

16. End of Life Options Law: Implications for Nurses Working in a Safety Net Long Term Care Facility

Ann Hughes - Laguna Honda Hospital & Rehabilitation Center/SFDPH

17. Engaging Nurses at the Bedside: Evaluation of Nurse Ethicist Participation in Unit Rounds

Susan Sorge, Kellie Lang, & John Hernandez - Children's Hospital of Wisconsin & Medical College of Wisconsin

18. Engaging Staff in Interdisciplinary Ethics Rounds in an Ambulatory Radiation Oncology Department

Julie Cronin, Lorraine Drapek, Kristen Ambrose, & Kathleen Donahue - Massachusetts General Hospital

19. Ethical Considerations in Perinatal Palliative Care

Jesse Wool, Charlotte Wool, & Joana Mendes - Children's Hospital of Philadelphia, York College of Pennsylvania, & Sao Francisco Xavier Hospital - Neonatal Intensive Care Unit (Lisbon, Portugal)

20. Ethical Issues When Honoring an Older Adult's Decision to Withdraw from Dialysis

Debra Hain - Florida Atlantic University

21. Ethically Driven Nursing Care: Shifting the Paradigm

Sheila Hahner - Children's Hospital of Pittsburgh of UPMC

22. Ethics Champion Programs: Fostering an Ethical Environment in Three Pediatric Settings

Karen Trotochaud, Angela Knackstedt, & Heather Fitzgerald - Children's Healthcare of Atlanta, Children's Mercy, Kansas City, & Children's Hospital Colorado

23. Ethics Consultations at an Academic Pediatric Medical Center: A Review of Cases from 2012 to 2015

Alyssa Burgart & Julie Collier - Stanford University

24. Everyday Ethics in Nursing Practice

Karin Huber & Sukhdeep Rathore - Children's Hospital of Philadelphia

25. Evidence for Interventions to Prevent or Mitigate Moral Distress

Benjamin Hickox - Mayo Clinic & University of Minnesota

26. Exploration of Moral Distress Among Pediatric Critical Care Nurses

Melissa Burton, Sandra Mott, Michele DeGrazia, & Hollis Caswell - Boston Children's Hospital & Shady Grove Adventist Hospital

27. Family Meetings in the NICU

Denise Ribeiro, Leticia Victorino, & Juliet Sasinski - UCLA, Santa Monica UCLA, & UCLA Health System, Santa Monica

28. Family Presence During Resuscitation

Alysia Adams - University of Kentucky Chandler Medical Center (UKCMC)

29. Frontline Nurses as Change Agents: Educating and Promoting Application of the American Nurses Association Code of Ethics for Nurses

Erica Garcia, Melissa Paule, & Paula Goodman-Crews - Kaiser San Diego Medical Center (Kaiser Permanente)

30. Getting to the Heart of the Matter: Facility Partnerships to Improve End-of-Life Care for Patients with a Ventricular Assist Device

Karen Nissen-Boryczka - UW Health

31. Giving Voice to the Ethical Narrative: How Ethics Rounds Provides a Safe Forum to Clinical Nurses' Sharing of Experience

Linda Ryan, Bessie Manley, Jessica Smith, & Ellen Robinson - Massachusetts General Hospital

32. Hearing the Voice of Nursing: A Structured Approach to Eliciting Feedback

Annette Ouellette, Monica Schilla, & Catherine McCarty - Essentia Health & Essential Institute of Rural Health

33. High-fidelity simulation for unit and ethics committee education: A multidisciplinary approach

Lezley Anderson & Birgitta Sujdak-Mackiewicz - Saint Francis Medical Center College of Nursing & Saint Francis Medical Center

34. Implementation of an "Ethics Early Action Research Protocol" and Infrastructure to Reduce Moral Distress among Critical Care Nurses

Maureen Keckeisen, Yuhan Kao, Sherry XU, Jennifer Do, Melanie Donovan, Lorraine Duli, and Dana Wong UCLA Health System aureen Keckeisen - UCLA Health

35. Implementation of an 'Ethics Early Action Research Protocol' in Two Surgical ICUs: Collaboration Amongst UCLA Medical Center, Mayo Clinic and Massachusetts General Hospital (MGH)

MGH Team: Mary McAuley, Vivian Donahue, Stephanie Kwortnik, Jennifer Carr-Loveland, Catherine Cusack, Katelyn Feins, Brittney Grazio, Laura Lux, Heather Chaffee, Moriah Jacobellis, Jamie Ronin, Donna Slicis, Nga Yan Chow, & Ellen M. Robinson

UCLA Principal and Study Lead Investigators: Carol Pavlish & Katherine Brown-Saltzman

Mayo Clinic Principal Investigator: Joan Henriksen-Hellyer

36. Implementation of an Intensive, Transformative Experience on End-of-Life Care for the Critical Care Nurse: A Process Improvement Project

Jeanne Marston - University of Massachusetts - Boston

37. Incapacitated Agents: A new and increasing dilemma in hospital care

Patrice Fedel & Karen Smith - Ascension/WFHC St. Francis

38. Lessons Learned from Nurses' Requests for Ethics Consultation: Why Did They Call and What Did They Value?

Virginia Bartlett & Stuart Finder - Cedars-Sinai Medical Center

39. Maximizing Palliative Care Resources in the Medical ICU

Nicole Agee, Marcus Jew, & Shelly Lee - Ronald Reagan UCLA Medical Center

40. Moral distress and associated contributors among nursing students: A multi-site descriptive study

Loretta Krautscheid - University of Portland

41. Moral Distress in the CICU: Myth or Reality?

Betsy Kannen - Children's National Health System

42. NoMMaD: A Unique Approach to a Healthy Work Environment by Minimizing the Harmful Effects of Moral Distress

Lori Hodge, Susan Hernandez, Shelley Brown-Cleere, & Michael Rubin - UT Southwestern Medical Center

43. Nursing ethics coordinator: A role that benefits ethics committees

Elizabeth Kohlberg - St. Louis Children's Hospital

44. Nursing in the trenches: Caring for chronically critically-ill children during prolonged ICU stays

Elizabeth Kohlberg - St. Louis Children's Hospital

45. Nurse Outcomes of the Clinical Ethics Residency for Nurses (CERN)

Ellen M. Robinson, Susan M. Lee, Pamela J. Grace, Martha Jurchak, & Angelika A. Zollfrank - Institute for Patient Care, Patient Care Services MGH; Yvonne L. Munn Center for Nursing Research, MGH; Center for Nursing Excellence, BWH; William F. Connell School of Nursing, Boston College; Department of Spiritual Care, Yale New Haven Hospital

46. Pharmacologic Research Among Neonates and Infants: A Review of the Inherent Ethical Issues

Heidi Machen - Children's Hospital Los Angeles

47. Promoting Moral Courage While Mitigating Moral Distress in a Level IV Neonatal Intensive Care Unit

Chara Kurtz, Karen Jones, & Joanna Buchanan - Children's Hospital Colorado

48. Shaping an Ethical Environment through Purposeful Partnerships: Methodist College and UnityPoint Healthcare Systems of Central Illinois

Lori Wagner - Methodist College

49. Supporting Ethical Dilemmas and Moral Distress in a Pediatric Intensive Care Unit

Teresa Richards, Leah Abecassis, & Michelle Gist - Boston Children's Hospital

50. Supportive Care Nursing Protocol for a Public Acute Care Hospital

Jutara Srivali Teal, Dana Rutledge, & Sue Robertson - Los Angeles County + University of Southern California Medical Center, Southern CSU DNP Consortium, Fullerton, & California State University, Fullerton

51. The Importance of Assent: A Jehovah's Witness Teen Presenting for Wolf-Parkinson White Ablation

Alyssa Burgart - Stanford University

52. The Many Faces of Vulnerable Patients

Cynthia LaSala, Catherine Cusack, & Christine M. Marmen - Massachusetts General Hospital

53. The promotion of resilience in ICU nurses: A conceptual framework

Emily Calabro - Oregon Health and Science University

54. Tracking long term fiscal benefits of investing in the ethical environment: Lessons learned from business culture researchers

Greta Martin - University of Washington Medical Center

55. U.S. Military Service Members' Experiences as Health Research Participants

Wendy Cook & Ardith Doorenbos - Naval Medical Center San Diego & University of Washington

56. Wounded Healers in the Workforce - Nurse Second Victims after Medical Error

Mady Stovall - Oregon Health & Science University

Sponsors

Ethics of Caring® gratefully acknowledges the support of the following donors, whose generous contributions have helped pave the way for the fourth collaborative National Nursing Ethics Conference.

"Real generosity toward the future lies in giving all to the present"
Albert Camus

Gold Level (\$5,000)

***Cedars Sinai Medical Center
Children's National Health System
Kaiser Permanente, SCAL Regional PCS
*UCLA Health**

Speaker Sponsor (\$3,000)

**Children's Mercy Kansas City
* St. Joseph Hospital Orange
UCLA School of Nursing**

Voyager Sponsor (\$2,500)

**Children's Hospital of Philadelphia
*Providence Health**

Advocate Sponsor (\$1,500)

***Sigma Theta Tau International Honor Society of Nursing Gamma Tau Chapter**

Educational Sponsor (\$1,250)

**Azusa Pacific University
Georgia Baptist College of Nursing of Mercer University
Harvard Medical School Center for Bioethics
Loyola Marymount University**

Supporting Partner (\$1,000)

**Children's Hospital of Colorado
Dana Farber Cancer Center
Tau Chapter – Sigma Theta Tau International (Georgetown)
Treuman Katz Center for Pediatric Bioethics, Seattle Children's**

Ethics of Caring® Core Sponsors

**Longstanding and ongoing support from our local institutions:
Cedars Sinai Medical Center, Children's Hospital Los Angeles, Kaiser Permanente, SCAL Regional PCS, Torrance Memorial Medical Center, Providence Health, Sigma Theta Tau International Honor Society of Nursing Gamma Tau Chapter, St. Joseph Hospital Orange, UCLA Health**

Additional Donations and Supportive Activities

**Beta Gamma Chapter of STTI of USF - Donation \$500
Hospital of the University of Pennsylvania - Donation \$500
UCLA Health, Department of Nursing Research & Education
provision of continuing education contact hours
AACN - provision of scholarships to their members
Daisy Foundation - marketing support
Nurses Christian Fellowship/Journal of Christian Nursing - marketing support**